



MAGNET ELEMENTARY  
School of Entrepreneurial Design

# WELCOME - MEET OUR TEAM



Gabriel Chidester,  
Principal



 @ConnMagnet

Christy Story,  
Assistant Principal



 @CONNmagnetAP

Carrie Bolding,  
Magnet Coordinator



 @CONNectingCONN

# "LITTLE THINKERS, BIG IDEAS"



Conn Magnet Elementary School is the only school in Wake County to offer students with the specialized Entrepreneurial Design program built on experiencing innovation. Daily instruction across all content areas is delivered through the lens of Entrepreneurial Design. Conn's program offers authentic, hands-on opportunities with local entrepreneurs.



# WHAT IS ENTREPRENEURIAL DESIGN?



Entrepreneurial Design involves teaching students how to utilize a problem-solving approach when approaching a task. CONNtreprenurs are “thinkers and tinkers” who are taught to: take Risks, utilize Design Thinking, explore new ideas, be innovative, and fail forward!







# BIG IDEA WEEK PROJECTS



All students, in all core classes, across all grade levels participate in quarterly culminating “Big Idea” Projects. These project pull together all core-area standards learned from that particular quarter. The students use our IDEAS Design Thinking Process, to problem-solve through STEM-based challenges.

The focus of the Big Idea Projects help students to build comfort and proficiency in utilizing a Design Thinking process in their approach to problem solve.



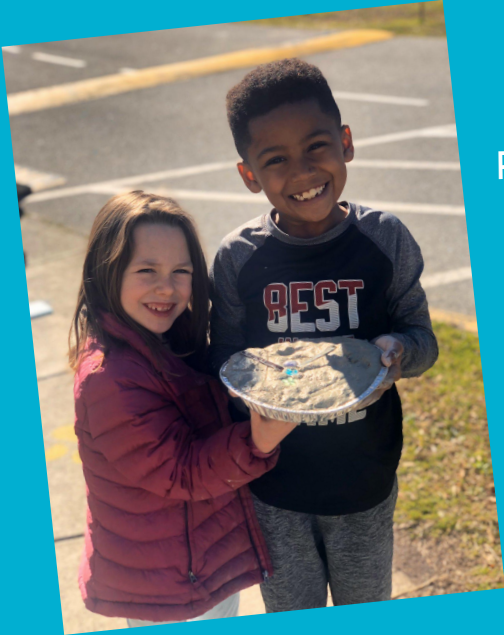
# K-2 BIW PROJECTS

Kindergarteners developed devices to protect Humpty Dumpty from his big fall, with the help of our local community firefighters.



First Graders made stepping stones after studying rocks and minerals.

Second graders created sound mazes with Sphero robots after learning about pitch, vibration and the way sound travels.





# 3-5 BIW PROJECTS

Third graders built pollinator hotels after learning all about plants and pollinators.



Fourth graders designed exercise and meal plans for astronauts and launch their packages to space.

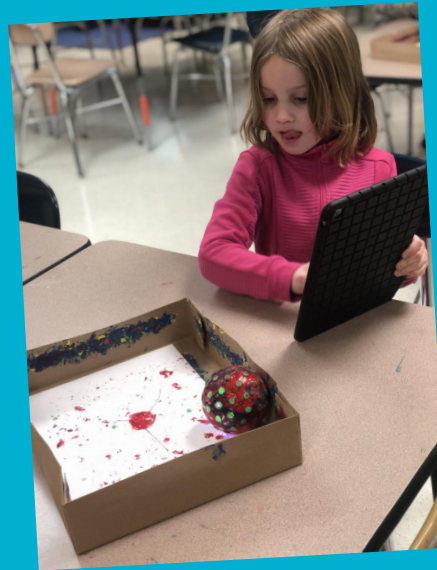
Fifth graders developed a 3D amusement park based on the systems of the human body.





# DIGITAL LEARNING

At Conn Magnet Elementary School of Entrepreneurial Design, we embed Digital Learning with Design Thinking across all content areas. Our students have access to iPads, Chromebooks, Robotics, 3D printing and a Glowforge.



# K-2 TECHNOLOGY

K-2 students use iPads within their classroom. Approximate maximum daily screen time is non-sequential with cumulative time no longer than 45 minutes at the highest grade in this span; used in short spans on a rotational basis.

Digital Learning includes:

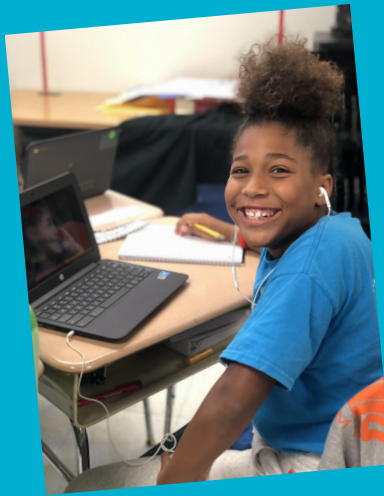
- Dreambox
- Literacy apps and Programs
- See Saw
- Goosechase
- Google Expedition
- Ozobots
- Sphero Robots



# 3-5 TECHNOLOGY



3-5 students use Google Chromebooks within their classroom. Approximate maximum daily screen time depends on level of need due to complexity of assignment and/or collaborative group work.



Digital Learning includes:

- Dreambox
- Google Classroom
- Google Slides
- Google Docs
- Office 365, OneDrive
- Spheros, Ozobots, Dot and Dash
- NC Wise Owl and Discovery Education
- Student Digital Portfolios

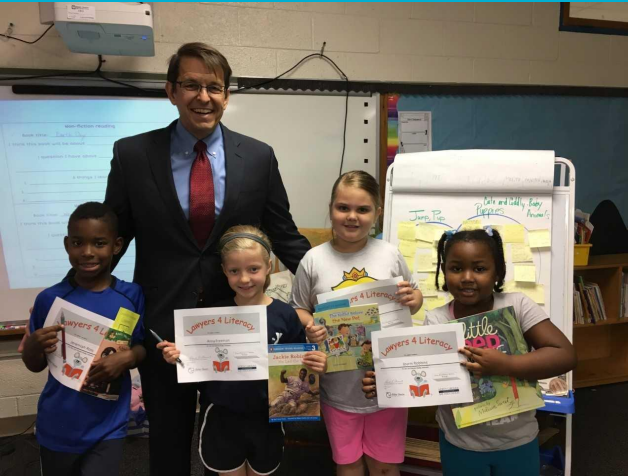
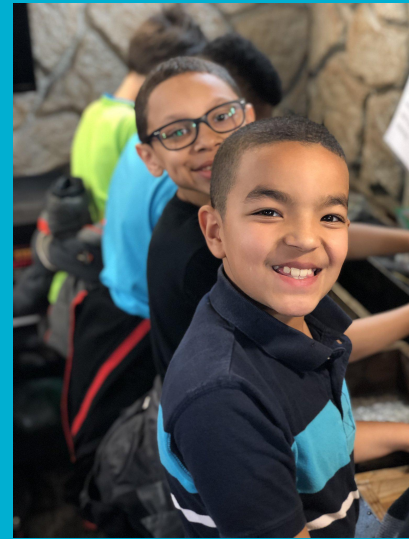




# COMMUNITY CONNECTIONS

Our robust community CONNECTIONS have been utilized at Conn for many years; therefore, the school has uniquely positive and impactful relationships with many community leaders and local companies!

- Local Business Partnerships
- Expert Speakers
- Community Excursions
- STEM Collaborative Network Member





# FOCUS AREAS

- Dance
- Drama
- Computer Science
- Visual Arts
- Music
- Physical Education





COMING

SOON!





# Our Future is Bright!



MAGNET ELEMENTARY  
School of Entrepreneurial Design









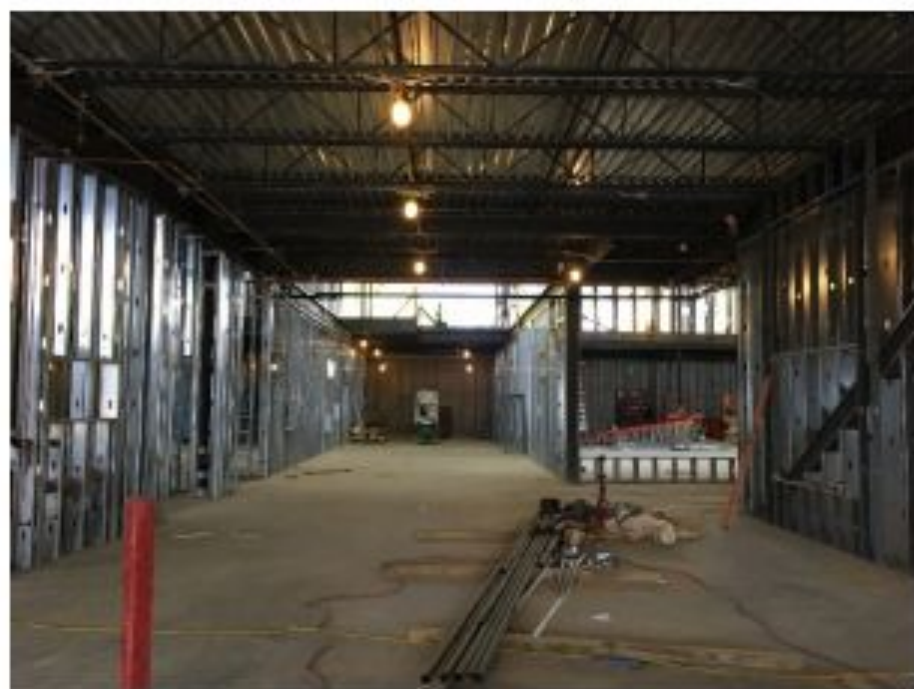
Overall view of Classroom Wing "A"



Overall view of Classroom Wing "B"



Overall view of Level 1 Admin Wing

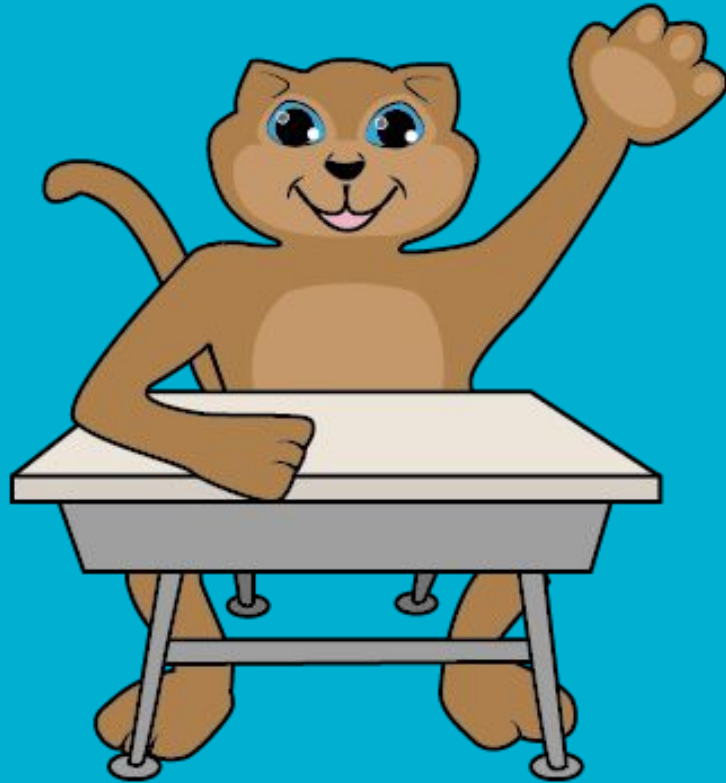


Overall view of Main Entry Lobby



Overall view of building construction progress, from March 2020

# FREQUENTLY ASKED QUESTIONS





# FREQUENTLY ASKED QUESTIONS



## 1. What are your school hours?

Our instructional day is 9:15 am to 3:45 pm. Students may be dropped off as early as 8:45 We are considered a late start elementary. We are also on the traditional calendar.

## 2. Does Conn have before or after school programs?

Yes, before school care is run by our teacher assistants and begins at 7:00 am. The afterschool program is offered through the Alexander YMCA, they provide rotation-based activities for students including technology, physical activity, homework help, crafts, and more. This is available until 6:00 pm.

## 3. What time is lunch?

Each class receives 25 minutes for lunch. Class lunch times are staggered from 11:00 am to 1:00 pm.

# FREQUENTLY ASKED QUESTIONS



## 4. What is the daily schedule like?

We follow the district wide minute requirements for each subject area. Students have daily lunch, recess and focus areas. Below is example of the kindergarten schedule.

8:45 am - 9:15 am

Morning Work

9:15 am - 9:25 am

Family Time

9:25 am - 11:00 am

Literacy (90 mins)

11:00 am - 11:25/30 am

Lunch

11:35 am - 12:05 pm

Recess

12:15 pm - 12:45 pm

Literacy Continued (30 mins)

12:45 pm - 1:45 pm

Math

1:55 pm - 2:40 pm

Specials

2:45 pm - 3:30 pm

Science

3:30 pm - 3:40 pm

Prepare for dismissal

# FREQUENTLY ASKED QUESTIONS



## 5. How is instruction differentiated?

- Teachers daily planning time
- Teacher collaboration with content specialists
- Weekly Professional Learning Teams
- Data-driven instruction
- Full-time AIG instructor
- K-3 Junior Explorers program

## 6. When is recess?

Students receive 30 minutes of recess daily.

## 7. What is the average class size?

We follow state mandated class size laws. The average class size for K-3 classrooms is 18 students.



# FREQUENTLY ASKED QUESTIONS



## 8. Do the classes have an Instructional Assistant?

Our kindergarten and first grade classrooms each have an instructional assistant.

## 9. How many students are at Conn?

Currently, we about 500 students enrolled.

## 10. How do students choose their focus areas?

K-1st grade students attend focus areas on a rotational basis. 2nd-5th grade students receive a focus area choice form before the focus area quarter begins. The students will rate their choices. Students are placed in their assigned focus area. Students typically always get their first or second choice.

# FREQUENTLY ASKED QUESTIONS

## 11. What clubs are offered at Conn?

- Student Ambassador Program
- Safety Patrol
- Conn First News Team
- Science Olympiad
- Odyssey of the Mind
- Pieces of Gold
- Track Team
- Before School Choir
- Chess Club





*Thank you for joining us!*



Stay CONNected with CONN

Facebook: [facebook.com/connmagnet](https://www.facebook.com/connmagnet)



Twitter: [@ConnMagnet](https://twitter.com/ConnMagnet)



School Website: [wcpss.net/connes](http://wcpss.net/connes)

